

## TO GO SETS



### EL-SKYPORT UNIVERSAL SPEED TRIGGER SET

N° 19357

For classic Elinchrom flash units and other flash brands.

Qty	N°	Article
1x	19350	Transmitter Speed, incl. battery
1x	19346	Universal Receiver Speed
1x	19355	Multivoltage Charger with Euro, UK and USA mains adapter
1x	11120	Sync cable 20 cm, 2.5 mm jack – camera pc
1x	11122	Sync cable 40 cm, 3.5 mm - 3.5 mm Jack
1x	11123	Sync cable 40 cm, 3.5 mm jack - EL Standard Sync socket
1x	11126	Sync Adapter 3.5 - PC female
1x	11125	Sync Adapter 6.2 - 3.5 jack



### EL-SKYPORT RX TRIGGER SET

N° 19358

Only for Style RX, Digital RX and Ranger RX battery units.

Qty	N°	Article
1x	19350	Transmitter Speed, incl. battery
2x	19353	Transceiver RX
1x	11120	Sync cable 20 cm, 2.5 mm jack - camera pc

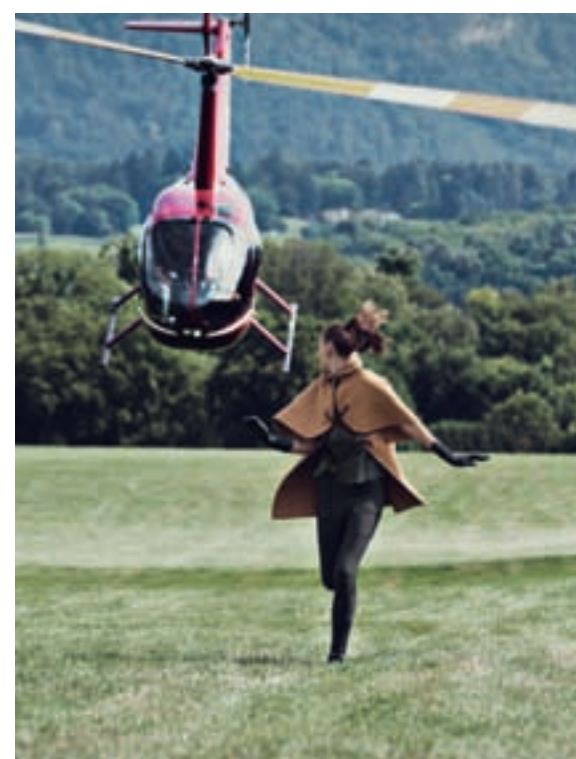


### EL-SKYPORT COMPUTER REMOTE & TRIGGER SET

N° 19359

Only for Style RX, Digital RX and Ranger RX battery units.

Qty	N°	Article
1x	19350	Transmitter Speed, incl. battery
2x	19353	Transceiver RX
1x	19348	USB Transceiver RX
1x	11120	Sync cable 20 cm, 2.5mm Jack / Camera X-socket
1x	11121	USB extension cable



The latest EL-Skyport Software for MAC® or WIN® operating systems is required, which is available as a free download at [www.elinchrom.com](http://www.elinchrom.com). The Ranger RX requires the ELS Transceiver RX Adapter 19374, which is part of every Ranger RX unit.

For further details, upgrades, news, the latest information about the EL-Skyport system and «how to do», please visit frequently the Elinchrom website. In the Support area the latest user guides and technical specifications can be downloaded. Technical data, features and functions of Elinchrom flash units and the EL-Skyport system may change without advise. No guarantee for misprints.

WHAT'S A NAME WORTH...  
ELINCHROM – SWISS FLASH MANUFACTURER SINCE 1962

**elinchrom**  
creative image lighting technology



**elinchrom**  
creative image lighting technology

**EL-SKYPORT**

This brochure may show images of products with accessories, which are not part of Sets or single units. Elinchrom Set and single unit configurations may change without advise and they might be different in other countries.

Photo: Anoush Abrar & Aimée Hoving [www.anoushaimee.com](http://www.anoushaimee.com)

72116 – EN – SKYPORT – 09.2012 – ELINCHROM – SWITZERLAND – [WWW.ELINCHROM.CH](http://WWW.ELINCHROM.CH)

EN

# EL-SKYPORT

## EL-SKYPORT SYSTEM

The EL-Skyport system allows the photographer to break free from sync cords and unreliable IR systems. Many improvements have been done to the EL-Skyport system since its launch.

Various levels of function and control are available depending on the units you have: The Universal receiver module can trigger cameras via optional shutter release cables and is compatible with all Elinchrom classic units, most speedlights and most of other flash brands for triggering.

Units with the built-in Skyport such as D-lite RX One, D-Lite RX 2/4, BRX 250/500 and Ranger Quadra Hybrid can be triggered and have the additional option of power settings and modelling lamp on/off.

The Style RX series, the Digital RX series and the Ranger RX series all require the Transceiver RX module to be triggered whereas the control of power settings and modelling on/off are also available. On these units, the SPEED mode can be activated via the EL-Skyport Software.

## FEATURES

Available programmable features are depending on the RX flash unit and Firmware.

From any of the three RX Remote Control Points, following features are available:

### RX Remote Control Features

- Flash Triggering
- Flash power up/down settings
- Modelling Lamp on/off
- Groups / Frequency Channels  
Select 4 working groups 8 frequency channels to separate working areas.
- Normal or Speed sync mode

### Additional Features with WiFi Module & Mobile Application

- Photocell on/off
- Eye-Cell  
Pre-flash management
- Ready Sound on/off  
Ready flash confirmation
- Slow Recharging
- Auto Off  
For Quadra & Ranger, to save battery power
- Head Socket Selection  
for power packs
- Stand By
- Modelling Lamp Setup  
off, prop., free.

### Additional Features with EL-Skyport Computer Software

- Photo Job  
the Virtual Studio Management simulates, saves and restores studio lighting setups. Unit settings can be applied automatically.
- Flash Delay programmable
- Flash Sync Sequence programmable for up to 20 flash units per second
- Flash Counter registers the total number of flashes the unit ever made, useful for rental and service.
- Temperature Display indicates the internal temperature of the flash unit.
- Firmware Update option for RX units.
- On/Off Counter useful information for rental and service.

## LEGEND

### RX Remote Control

The continuous lines are showing controllable RX features. The available RX features are depending on the EL-Skyport module, the flash unit type and the Firmware version.

### Universal Receiver Speed

The dashed lines are showing the general basic features of the Universal Receiver Speed.

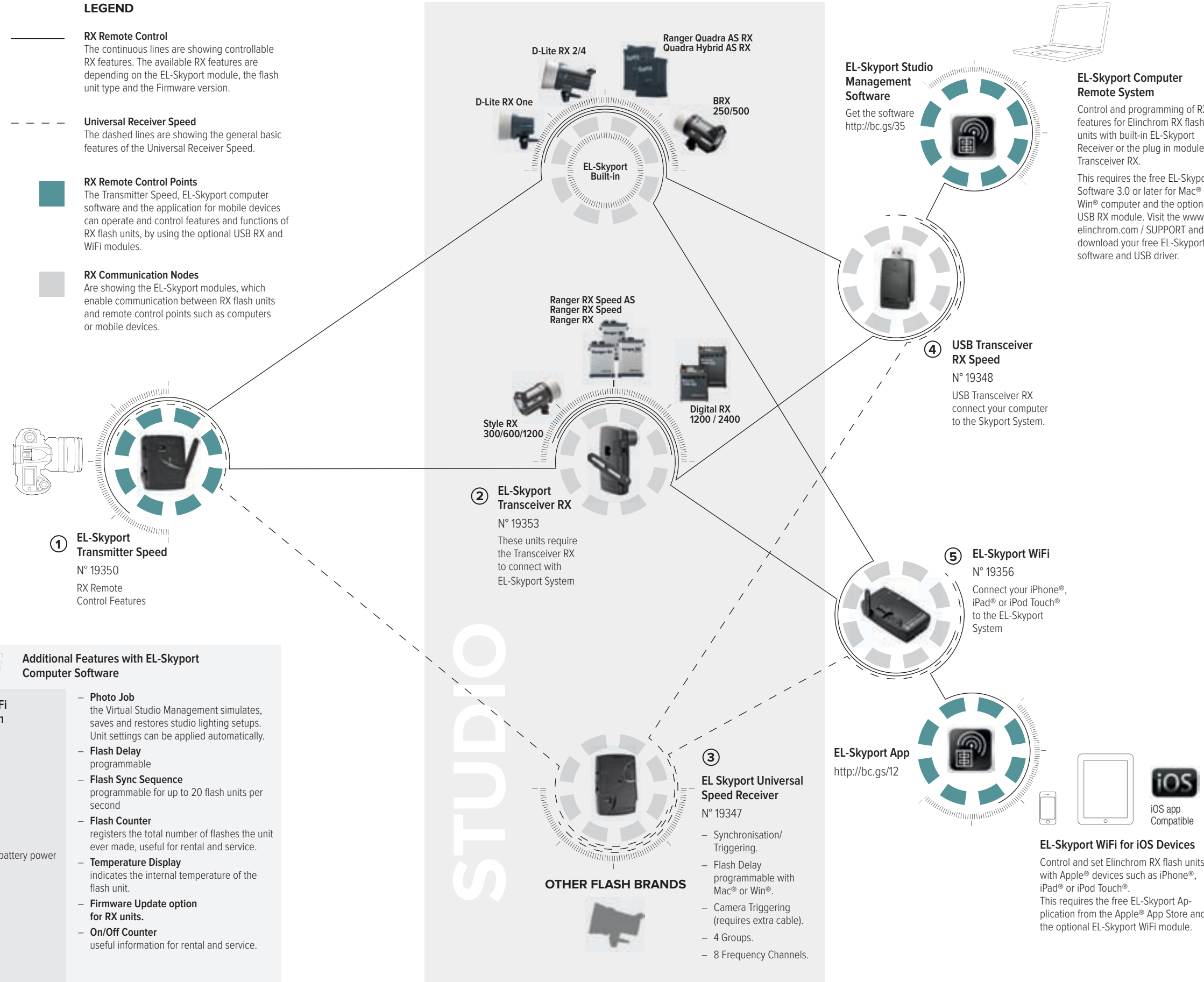
### RX Remote Control Points

The Transmitter Speed, EL-Skyport computer software and the application for mobile devices can operate and control features and functions of RX flash units, by using the optional USB RX and WiFi modules.

### RX Communication Nodes

Are showing the EL-Skyport modules, which enable communication between RX flash units and remote control points such as computers or mobile devices.

# REMOTE CONTROL SYSTEM



### EL-Skyport Studio Management Software

Get the software <http://bc.gs/35>

### EL-Skyport Computer Remote System

Control and programming of RX features for Elinchrom RX flash units with built-in EL-Skyport Receiver or the plug in module Transceiver RX.

This requires the free EL-Skyport Software 3.0 or later for Mac® or Win® computer and the optional USB RX module. Visit the [www.elinchrom.com](http://www.elinchrom.com) / SUPPORT and download your free EL-Skyport software and USB driver.

### 4 USB Transceiver RX Speed

N° 19348

USB Transceiver RX connect your computer to the Skyport System.

### 5 EL-Skyport WiFi

N° 19356

Connect your iPhone®, iPad® or iPod Touch® to the EL-Skyport System

### EL-Skyport App

<http://bc.gs/12>

### EL-Skyport WiFi for iOS Devices

Control and set Elinchrom RX flash units with Apple® devices such as iPhone®, iPad® or iPod Touch®.

This requires the free EL-Skyport Application from the Apple® App Store and the optional EL-Skyport WiFi module.

## 1 EL-SKYPORT TRANSMITTER SPEED

The ELS Transmitter Speed enables the triggering of units attached via a Universal Skyport module, all units with built-in Skyport and all Elinchrom units to which a Transceiver RX is attached.

The additional control of power settings and modelling lamp on/off can be achieved on all Elinchrom units with built-in Skyport RX (D-Lite RX One, D-Lite RX 2/4, BRX 250/500 and Ranger Quadra Hybrid) and on all Elinchrom units, which require the Transceiver RX (Digital RX 1200/2400, Ranger RX/Speed/Speed AS and Style RX 300/600/1200).

### Features

- +/- buttons to change flash power settings and modelling lamp on/off.
- Test button for manual flash trigger.
- Switch selection for 8 different Frequency Channels.
- Switch selection for 4 different Groups.
- All switch to control all units of Group 1 to 4.
- LED status for sync mode and battery level status.
- Long life Lithium battery to provide over 30000 flashes.
- Integrated hot-shoe with screw lock.
- Super small. Only 4 cm x 5 cm.
- Ultra lightweight. Only 36 g including the battery!

## 2 EL-SKYPORT TRANSCIEVER RX

This module fits only to Elinchrom dedicated units such as the Digital RX series, the Ranger RX series and the Style RX series. No extra battery required for the Transceiver to be ready to use. For the Ranger RX series, the ELS Transceiver RX Adapter is required.

This module is required on these units to allow the control of power settings, modelling lamp on/off and flash synchronisation via the ELS-Transmitter. Basic features can also be controlled via Apple devices with the optional WiFi module. Additional features such as Flash Delay and Flash Counter can be

accessed with the EL-Skyport software 3.0.

The Speed mode function is also available for units, which require the Transceiver RX via the EL-Skyport software 3.0, available as a free download for MAC® and WIN® at [www.elinchrom.com](http://www.elinchrom.com)

### Features

- Switch selection for 8 different Frequency Channels.
- Switch selection for 4 different Groups.
- Recognition by the EL-Skyport software 3.0 and EL-Skyport Mobile App.

## 3 EL-SKYPORT UNIVERSAL SPEED RECEIVER

The Universal Speed Receiver is compatible with Classic Elinchrom units, most speedlights and most of other flash brands. Allow yourself to keep using your studio flash units with your speedlights!

The Universal Speed Receiver includes several sync cables, adapters and a multivoltage charger with Euro, UK and USA mains adapter and EL-Standard sync cables and 3.5mm jack, to connect to other units.

The charger can be connected to the mains whilst the Universal Receiver is in use.

### Features

- 30 hours of battery use.
- The Li-Ion battery rechargers in approx. 3 hours with the included charger. No need for extra batteries.
- Auto-Standby function when not used for 4 hours.
- Integrated intelligent quick-charge circuit to recover deeply discharged batteries.
- Switch selection for 8 different Frequency Channels.
- Switch selection for 4 different Groups.
- Camera Triggering. This feature requires optional shutter camera release cables.
- Recognition by the EL-Skyport software 3.0 for trigger and Flash-Delay settings.
- Super small. Only 6.5 cm x 5 cm.
- Ultra lightweight. Only 54 g including the battery!

## 4 USB TRANSCIEVER RX SPEED AND EL-SKYPORT STUDIO MANAGEMENT SOFTWARE

The USB Transceiver RX modules fit any MAC® or WIN® computer.

By installing the EL-Skyport Software 3.0 all Elinchrom RX units can be controlled. The program will automatically search for units with Transceiver RX modules or with built-in Skyport RX receivers. The Universal module can also be detected but only offers synchronization and strobing option.

Managing one studio can get tricky when many lights are involved. The Elinchrom Skyport Software 3.0 provides the perfect solution. The latest release of the EL-Skyport Software has been developed to help photographers with their workflow.

Available as a free download from our website, the EL-Skyport 3.0 allows photographers the ability to control all of their Elinchrom RX lighting equipment directly from

their MAC® or WIN® operating systems.

An additional feature of this software is the Photo-Job function. Photo-Job is basically a Studio where EL-Flash units, accessories and all settings can be then saved and shared to other photographers using the EL Skyport Software 3.0. An excellent way for students or anyone who wants to learn more about photography to share their experience on photography forums.

### Features

- Control of functions of all Elinchrom RX units.
- Firmware update.
- Programmable Timer.
- ON/OFF Flash Counter.
- Photo Job Studio Management.

## 5 EL-SKYPORT WIFI AND MOBILE APPLICATION FOR APPLE® MOBILE DEVICES

Uniquely Elinchrom Skyport. This is the first wireless system which enables the remote control and the remote of Elinchrom RX flash units from Apple® mobile devices such as iPhone®, iPad® and iPod Touch®. The idea is to use devices for controlling flash units, which already exist in big volume in the market and which many owners consider to be the most practical and user friendly mobile devices ever. All Elinchrom RX units can be controlled but various features are accessible depending on the unit detected.

The Skyport WiFi module is the bridge between Apple™ devices

and Elinchrom flashes. This module can also act a Universal Speed Receiver at the same time.

### Features

- Control features with an Apple device.
- Frequency and Group settings are adjustable on the application.
- Shares the same technical specification as the Universal module.
- Up to 50 m outdoor in Wifi mode and up to a 100 m in Skyport mode.
- Up to 20 m indoor in Wifi mode and up to 40 m in Skyport mode.
- Wireless firmware update via the EL-Skyport software 3.0.

## 3 +

### EL-Skyport Universal Speed Receiver REPLACE

N° 19346

To purchase a ELS Universal Receiver REPLACE unit, a used Universal Receiver with a defective or end of life battery must be returned to the dealer. The defective Universal modules will then be recycled by Elinchrom to save the environment. The Universal Receiver REPLACE module does not include sync cables or charger.

## EL-SKYPORT DISTANCE RANGE

### Indoors Range

Up to 60 m in Normal sync mode.  
Up to 40 m in Speed sync mode.

### Outdoors Range

Up to 120 m in Normal sync mode.  
Up to 70 m in Speed sync mode.