

WWW.NANLITE.COM

GUANGDONG NANGUANG PHOTO&VIDEO SYSTEMS CO., LTD

Tel: +86-0754-85751187 85310187

Fax: +86-0754-85300887

E-mail: info@nanlite.com

Add: Zhanglin Section, 324 Highway, Dongli Chenghai Shantou City, Guangdong China



NL201909-2

NANLITE

Light Your Frames!

Guangdong Nanguang Photo&video Systems Co., Ltd



NANLITE

The way we capture images is evolving. It's making content creation more approachable and diverse than it's ever been before. Projects that could only be accomplished by large studios and huge budgets are now in reach of anyone with a dream and the dedication to chase it. It's time for lighting to redefine itself and evolve as well. With this in mind NANGUANG, a company passionately dedicated to the lighting industry for 27 years, has started a new brand – NANLITE.

At NANLITE we strive to design lighting products that provide image makers with new possibilities and push them to expand their creative horizons as we vow to expand ours as well. We listen to customer feedback, focus on design details, and optimize the user experience of our products. We stand behind all of our products and provide the best technical support available to help you accomplish your vision effortlessly.

Our long history has taught us how to carefully select our materials, continually improve our manufacturing processes, and maintain strict quality control on all of our products. We hold ourselves to the highest standards in manufacturing and design in hopes that the lights we produce will ignite new ideas for image making. We believe the value of our lights is not just in the light itself; it's more about helping creatives realize their vision. We hope that with our lighting a creator's only limitation will be their imagination.

CONTENTS

01-06	Forza Seires Spot Light
07-10	MixPanel Series RGBWW LED Panel
11-16	PavoTube series RGBWW Tube Light
17-21	Mix Series RGB Light
22-25	LumiPad Series Soft Panel
26-32	Compac Series Studio Light
33-34	P Series LED Spot Light
35-36	LitoLite Series LED Focusable Light
37-44	halo Series Ring Light
45-48	SA Series LED Panel
49-54	Accessories & Bags
55-56	Backdrop Elevator Series



Forza 500

Forza 300

Forza 60

Forza Series Spot Light

Amazing high brightness, Impressively compact
Special lighting effects



Forza Technical Data

Model	Forza 60	Forza 300	Forza 500
Power Consumption	60W	300W	500W
Power Supply	DC15V/6A, 100-240V AC	DC48V/8.4A, 100-240V AC	DC48V/12.5A, 100-240V AC
CRI (Ra)	98	98	98
TLCI	95	95	95
Color Temperature	5600K	5600K	5600K
Dimming	0 to 100 % continuous	0 to 100 % continuous	0 to 100 % continuous
Control	Dimming, 2.4G wireless control, Wifi control, DMX		
Dimensions	194.3 x 105.0 x 82.0mm / 7.6 x 4.1 x 3.2"	308.5 x 205.0 x 123.0mm / 12.1 x 8.1 x 4.84"	308.5 x 205.0 x 142.0mm / 12.1 x 8.1 x 5.6"
Weight	Light	0.8 kg / 1.8 lb	2.3 kg / 5.1 lb
	Light+Adapter+Power Box	1.3 kg / 2.9lb	4.8 kg / 10.6 lb
Configuration	Light x 1pc, Power Adapter x 1pc, Reflector x 1pc, Carrying Bag x 1pc.	Light x 1pc, Power Adapter x 1pc, Reflector x 1pc, Carrying Bag x 1pc, Control Box x 1pc, Light Stand Clamp x 1	

Illumination(lux /fc)

Model	Forza 60					Forza 300				Forza 500				
Distance	1M	2M	3M	4M	5M	1M	3M	5M	9M	1M	3M	5M	9M	12M
With Standard reflector	11950lux 1111fc	2882lux 268fc	1234lux 115fc	701lux 65fc	451lux 42fc	43060lux 4005fc	4073lux 379fc	1462lux 136fc	485lux 45fc	75290lux 7002fc	7073lux 658c	2661lux 247fc	902lux 84fc	457lux 43fc
Without lens	2884lux 268fc	743lux 69fc	353lux 33fc	216lux 20fc	148lux 14fc	13260lux 1233fc	1598lux 149fc	655lux 61fc	226lux 21fc	19820lux 1843fc	2217lux 206fc	835lux 78fc	289lux 27fc	180lux 17fc
With Fresnel lens Spot 10°	38315lux 3563fc	8652lux 805c	3770lux 351fc	2080lux 193fc	1310lux 122fc	128679lux 11967fc	14250lux 1325fc	4906lux 456fc	1456lux 135fc	N/A	25090lux 2333fc	8637lux 803fc	2606lux 242fc	1462lux 136fc
With Fresnel lens Flood 45°	8620lux 802fc	2299lux 214fc	1894lux 176fc	578lux 54fc	375lux 35fc	39805lux 3702fc	4500lux 419fc	1714lux 159fc	604lux 56fc	48810lux 4539fc	6084lux 566fc	2242lux 209fc	752lux 70fc	467lux 46fc

Forza 60

Palm-sized body, Big on Versatility

Main Features

1. Standard CCT, CRI: 98 and TLCI: 95
2. Amazing high brightness, 23,860lux @ 1m with optional Fresnel lens in Spot.
3. Comes with four lighting effects: Storm, Flash, TV, Bad bulb
4. Light weight and dual power supply, suitable for indoor and on location
5. 330 degrees adjustable body, L shape handle, easy of operation

Optional:



SB-FZ60 Parabolic Softbox FL-11 Fresnel Lens RC-1 Remote Controller NanLink Lighting Control System BH-FZ60 Battery Handle

Standard Configuration:

Light x 1pc, Power Adapter x 1pc, Reflector x 1pc, Carrying Bag x 1pc



Forza 300/500

1. Standard CCT, CRI:98 and TLCI: 95.
2. Amazing high brightness, high output 300W/500W focusable LED.
3. Comes with four lighting effects: Storm, Flash, TV, Bad bulb.
4. Separate lighting fixture and power box design, dual power supply, suitable for indoor and on location.
5. LCD Display, strap handle, Wifi wireless/DMX control, easy your operation
6. Bowens mount to match countless affordable lighting modifiers.
(Beauty dish, reflector, softbox, soft umbrella etc.)

LCD Display



Light stand clamp



Parabolic Softbox(buy additional)



Light stand clamp





Standard Configuration:

Light x 1pc, Power Adapter x 1pc, Reflector x 1pc, Carrying Bag x 1pc

Optional:



FL-20 Fresnel Lens
work with Forza 300



SB-PR-90/120/150
Parabolic Softbox



RC-1
Remote Controller



NanLink Lighting
Control System

Standard Bowens Mount

The Forza300/500 come with standard Bowens mount,
Compatible with over 50+ lighting Modifiers
paint your subject with endless light shaping possibilities.

Forza 60 Kit

Forza 60 2KIT-PT

- Forza 60 x 2
- AC Power adapter 15V6A x 2
- RF-FZ60 Reflector x 2
- FL-11 Fresnel Lens (with barndoor) x 1
- BH-FZ60 Battery Holder x 2
- CC-PT-37 Trolley Case x 1



Forza 60 3KIT-PT

- Forza 60 x 3
- AC Power adapter 15V6A x 3
- RF-FZ60 Reflector*3
- FL-11 Fresnel Lens (with barndoor) x 1
- BH-FZ60 Battery Holder x 3
- CC-PT-37 Trolley Case x 1



Forza 60/ LumiPad 25 3KIT-P

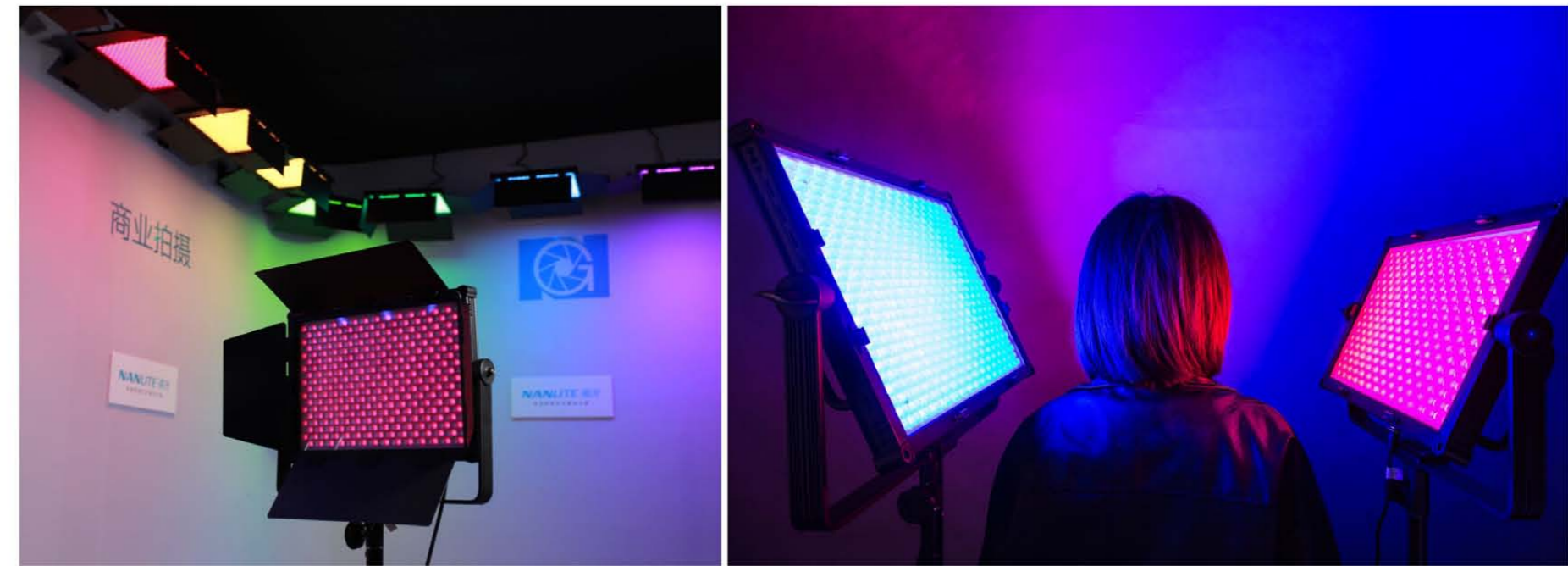
- Forza 60 x 1
- AC Power adapter 15V6A x 1
- RF-FZ60 Reflector x 1
- LumiPad 25 with power adapter (15V2A) x 2
- BH-FZ60 Battery Holder x 1
- CC-P-38 Carry Case x 1





MixPanel RGBWW LED Panel light

RGBWW LED Panel, DMX and WiFi wireless control, Filter mode, Special Lighting effects, Multi lighting sources, high brightness output in a compact size.



MixPanel RGBWW LED Panel light, adopts the latest technology with ultra-high output with hard & soft light features, with filter modes and special effects, able to adjust to whatever scenes required for video, studio and movies. With this versatile light, can help open up to more creativity.



Wireless Control



WIFI-2.4G



DMX

MixPanel 60/150

1. Available in two versions: MixPanel 60 in 60W x 5 and MixPanel 150 in 150W x 5 RGBWW LED Panel.

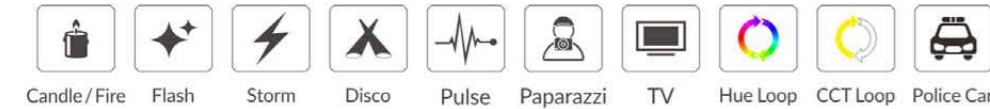
Both can be powered by an AC adapter or V-mount battery.

2. CRI: 98 TLCI: 95 CCT: 2700K - 7500K

3. 43 GELS and 10 special lighting effects---HUE LOOP, CCT LOOP, FLASH, PULSE, STORM, POLICE CAR, TV, PAPAZZI, CANDLE / FIRE, DISCO, which can be saved for later use.

4. Remote control type: 2.4G, Wi-Fi, DMX.

5. Controller firmware can be updated via USB port.



Standard Configuration:

Light included barndoor x 1pc

AC Power adapter x 1pc

Carrying Bag x 1pc

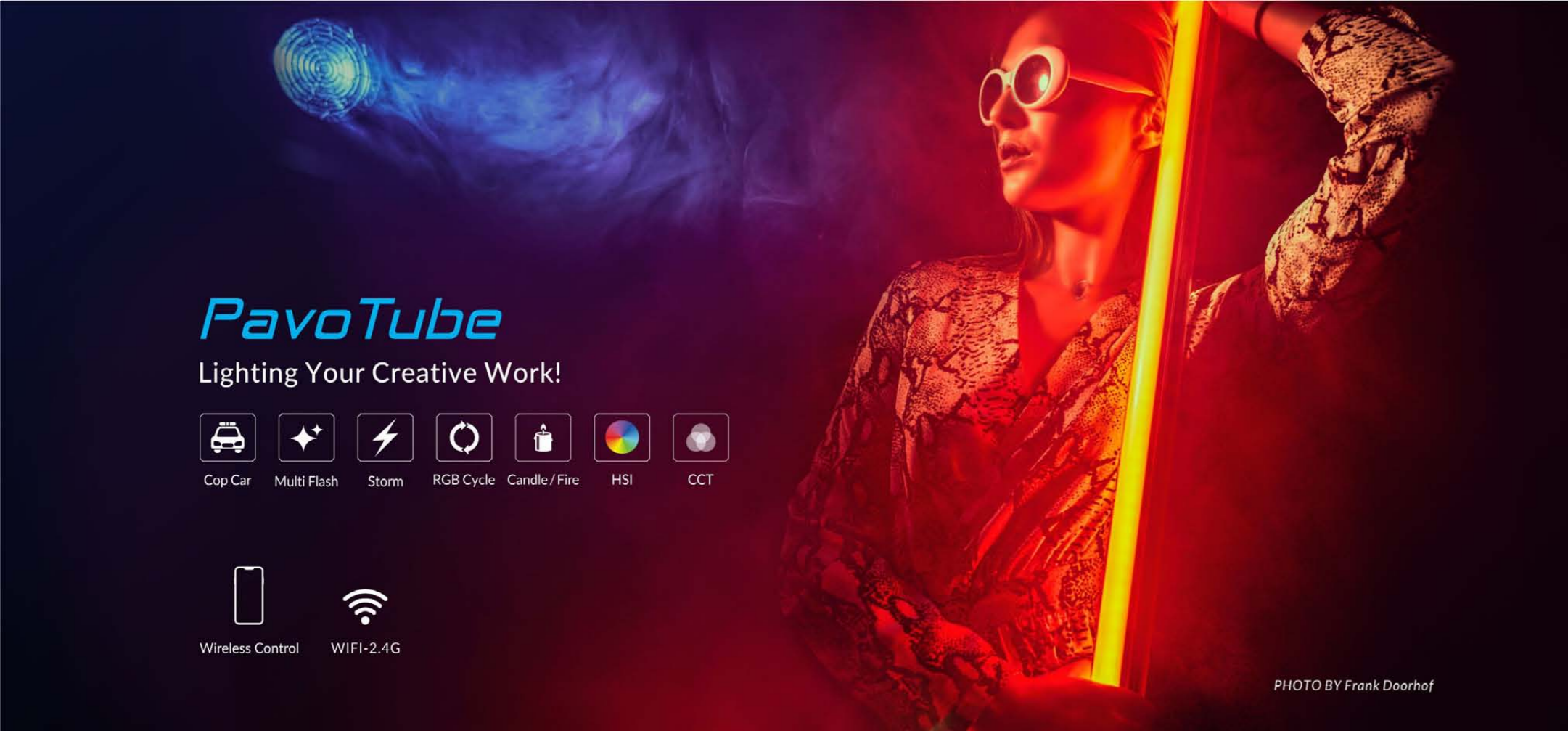
Options (Buy additionally):



Mixpanel Technical Data

Model	MixPanel 60	MixPanel 150
Power Consumption	60W x 5	150W x 5
Power Supply	DC15V/6A, 100-240V AC	DC24V/7.5A, 100-240V AC
CRI (Ra)	98	98
TLCI	95	95
Color Temperature	2700K - 7500K	2700K - 7500K
Dimming	Yes, 0 to 100% (Continuous)	Yes, 0 to 100% (Continuous)
Remote Control Type	2.4G, Wi-Fi, DMX	2.4G, Wi-Fi, DMX
Special Liting Effects	Hue Loop, CCT Loop, Flash, Pulse, Storm, police car, TV, Paparazzi, Candle / Fire, Disco	
Dimensions	350 x 425.9 x 81.6mm / 13.8 x 16.7 x 3.2"	414.5 x 482 x 81.6mm / 16.3 x 19.0 x 3.2"
Weight	Light	3.3kg / 7.3lb
	Light+Adapter	3.75kg / 8.3lb
Weight	Light	4.1kg / 9.0lb
	Light+Adapter	4.75kg / 10.5lb

Model	Illumination(Lux)					Illumination(Lux)				
	MixPanel 60					MixPanel 150				
Distance	1M	2M	3M	4M	5M	1M	2M	3M	4M	5M
2700K	4633lux 430fc	1291lux 120fc	605lux 56fc	350lux 33fc	233lux 22fc	10060lux 935fc	2873lux 267fc	1343lux 125fc	788lux 73fc	526lux 49fc
3200K	5351lux 497fc	1510lux 140fc	699lux 65fc	408lux 38fc	270lux 25fc	11650lux 1082fc	3370lux 313fc	1563lux 145fc	919lux 85fc	612lux 57fc
5600K	5784lux 54fc	1620lux 151fc	749lux 70fc	440lux 41fc	292lux 27fc	12820lux 1191fc	3689lux 343fc	1713lux 159fc	1008lux 94fc	671lux 62fc
7500K	5814lux 540fc	1653lux 154fc	761lux 71fc	443lux 41fc	293lux 27fc	12830lux 1192fc	3704lux 344fc	1713lux 159fc	998lux 93fc	666lux 62fc
R	1672lux 155fc	472lux 44fc	219lux 20fc	128lux 12fc	85lux 8fc	2794lux 260fc	785lux 73fc	365lux 34fc	214lux 20fc	143lux 13fc
G	3553lux 330fc	967lux 90fc	450lux 42fc	266lux 25fc	179lux 17fc	5711lux 531fc	1590lux 148fc	747lux 69fc	445lux 41fc	299lux 28fc
B	650lux 60fc	180lux 17fc	83lux 8fc	49lux 5fc	33lux 3fc	1160lux 108fc	320lux 30fc	150lux 14fc	90lux 8fc	60lux 6fc



PavoTube

Lighting Your Creative Work!



PHOTO BY Frank Doorhof



Best Continious Light
Photography news
2018 AWARDS

1. STUDIO QUALITY LIGHTING

0-100% dimming, adjustable color temperature from 6500-2700K as well as a RGB+W and pre-programmed special lighting effects. Have easy-to-use dials and buttons, easy to operate.

2. POWER ANYWHERE

PavoTube can run off either the included AC adapter or their internal Li-ion batteries for up to 2 hours at full brightness when no mains power is available.

3. LIMITLESS POSSIBILITIES

Simply connect multiple PavoTubes together via the included sync cord to build and shape a powerful bank of lights with synchronized adjustments and effects

The NANLITE PavoTube RGBWW light can create fashionable and impressive atmosphere. The special lighting effects can help to create scene simulations of cop car lights, disco and red carpet flashing bulbs and more, saving money and time when filming. With a beautiful long strip shape, the tube can be used as the prop, as apart of the scene. allowing for more creativity.

For more videos, please visit www.nanlite.com



Film / Video Production

Commercial Shooting



DQP: Alexandru Don



Product Shooting

Product Information

Versatile lighting fixture featuring 0% to 100% dimming, adjustable color temperature from 2700K - 6500K as well as RGBWW and pre-programmed special lighting effects. It can be used in a widevariety of photo, video and broadcast productions.

Optional:



NanLink Lighting Control System



Details:



Control Part



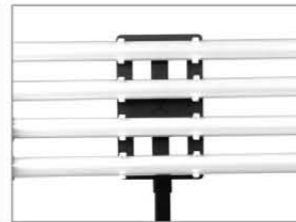
Dimmer



Instruction



Clip Mount



Mount Plate
(Optional)



Sync Cable
(Optional)

PavoTube Technical Data

Model	<i>PavoTube 15C</i>	<i>PavoTube 30C</i>
Power Consumption	16W	32W
Power Supply	15V 3A DC	15V 4A DC
CRI (Ra)	98	98
TLCI	95	95
Color Temperature	2700K - 6500K	2700K - 6500K
Dimming	0 to 100 % continuous	0 to 100 % continuous
Control	Dimming, 2.4G wireless control, Wifi control, Synchro control	Dimming, 2.4G wireless control, Wifi control, Synchro control
Special Effect	Storm, Copcar, Candle, Lightning,Flash, Color Cycle	Storm, Copcar, Candle, Lightning,Flash, Color Cycle
Dimensions	770 x 48 x 48mm / 30.3 x 1.9 x 1.9"	1170 x 48 x 48mm / 46.1 x 1.9 x 1.9"
Weight	0.85kg / 1.87lb	1.2kg / 2.65lb

Illumination(lux/fc)

Model	<i>PavoTube 15C</i>			<i>PavoTube 30C</i>				
	1M	2M	3M	1M	2M	3M	4M	5M
2700K	375lux 35fc	99lux 9fc	46lux 4fc	633lux 59fc	194lux 18fc	101lux 9fc	63lux 6fc	45lux 4fc
6500K	430lux 40fc	117lux 11fc	53lux 5fc	719lux 67fc	209lux 19fc	111lux 10fc	70lux 7fc	50lux 5fc
R	157lux 15fc	41lux 4fc	19lux 2fc	251lux 23fc	82lux 8fc	43lux 4fc	30lux 3fc	23lux 2fc
G	383lux 37fc	101lux 9fc	47lux 4fc	663lux 62fc	210lux 20fc	109lux 20fc	66lux 6fc	48lux 4fc
B	60lux 6fc	16lux 1fc	7lux 1fc	103lux 10fc	38lux 6fc	23lux 2fc	17lux 2fc	13lux 1fc

PavoTube Kit

The PavoTube is sold in kit which have 1kit,2kit,4kit available.
Provide more possibility for your different shooting requirement.



HD-T12-4-BHG

HD-T12-2-BHG

HD-T12-4-BHP



HD-T12-2-BHP

HD-T12-1-BHP

HD-T12-1-CP

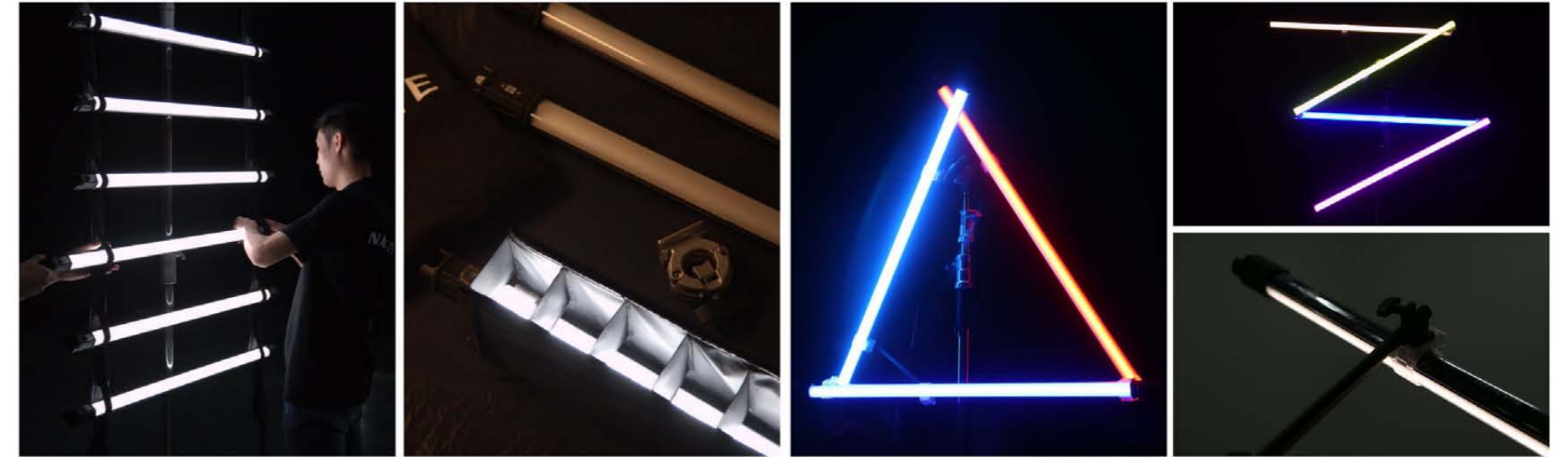
HD-T12-1-LA



(Light stand is not included)

Standard Configuration

	PavoTube 15C KIT			PavoTube 30C KIT		
	1 KIT	2 KIT	4 KIT	1 KIT	2 KIT	4 KIT
PavoTube 15C x 1		PavoTube 15C x 2	PavoTube 15C x 4	PavoTube 30C x 1	PavoTube 30C x 2	PavoTube 30C x 4
Carrying Bag x 1		Carrying Bag x 1	Carrying Bag x 1	Carrying Bag x 1	Carrying Bag x 1	Carrying Bag x 1
AC Power Adapter x 1		AC Power Adapter x 1	AC Power Adapter x 2	AC Power Adapter x 1	AC Power Adapter x 1	AC Power Adapter x 2
Clip x 1		1/2 DC Power Cord x 1	1/2 DC Power Cord x 2	Clip x 1	1/2 DC Power Cord x 1	1/2 DC Power Cord x 2
/		Clip x 2	Clip x 4	/	Clip x 2	Clip x 4
/		Master-slave Cable x 1	Master-slave Cable x 3	/	Master-slave Cable x 1	Master-slave Cable x 3



HD-T-10-LS

Hook&Loop tube band for 10 tubes

With the tube band we are able to expand the tube become a big panel light, quick installation and easily pack



Dimension: 2m / 6.5ft
Tube capacity: 10



BD-PT15C+EC/BD-PT30C+EC

Eggcrate grid for tube light

Direct the beam angle to be concentrated Light



Dimension: 58.5cm / 1.9ft
98.5cm / 3.2ft
Weight: about 0.95kg / 2lb

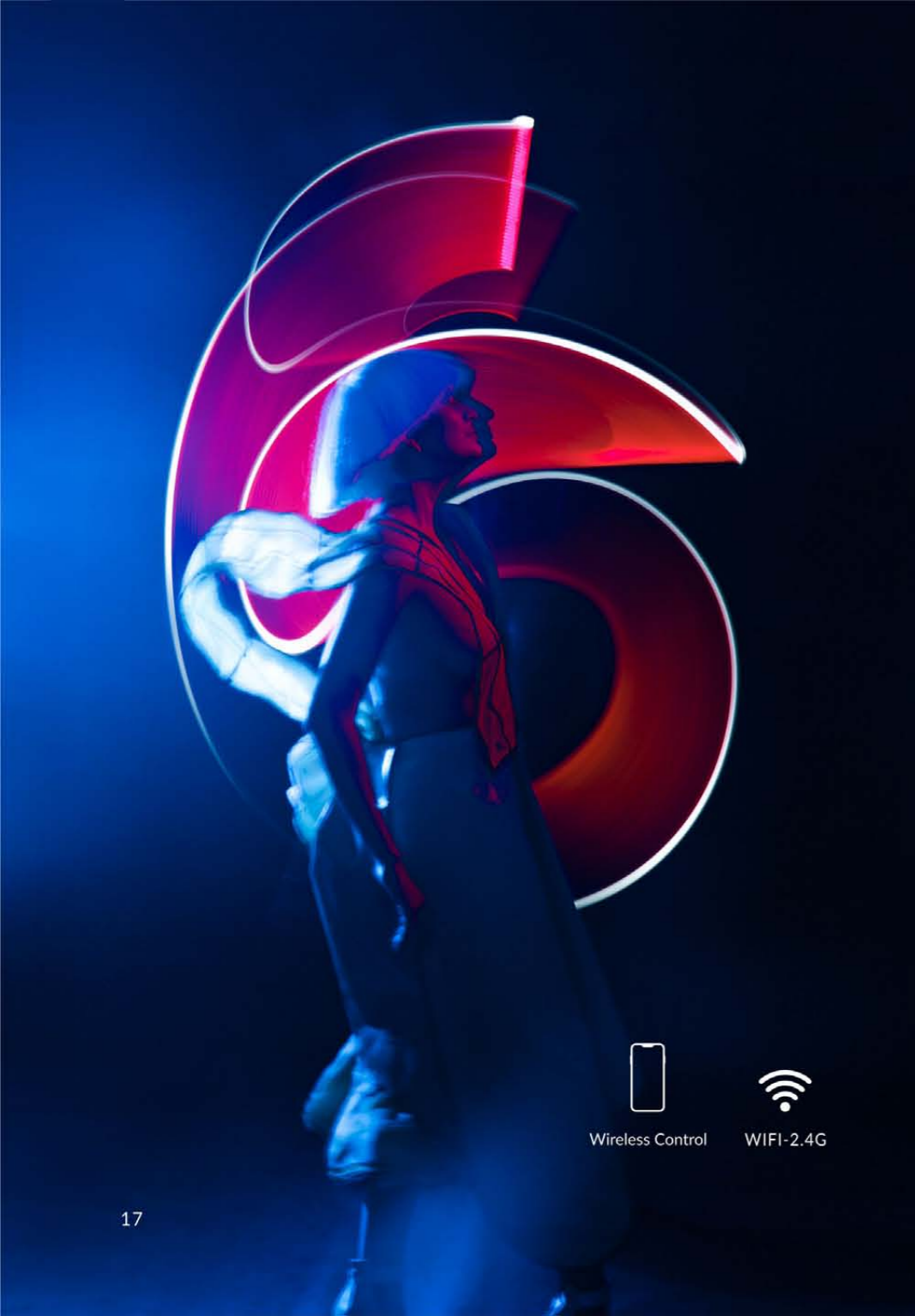


DIY Tube Holder

Creative DIY Tubelight Holder, provide you more possibility.



Configuration:
2 in 1 Tube Holder x 2pcs
Aluminous Pole 395mm x 2pcs
Tube Holder x 4pcs



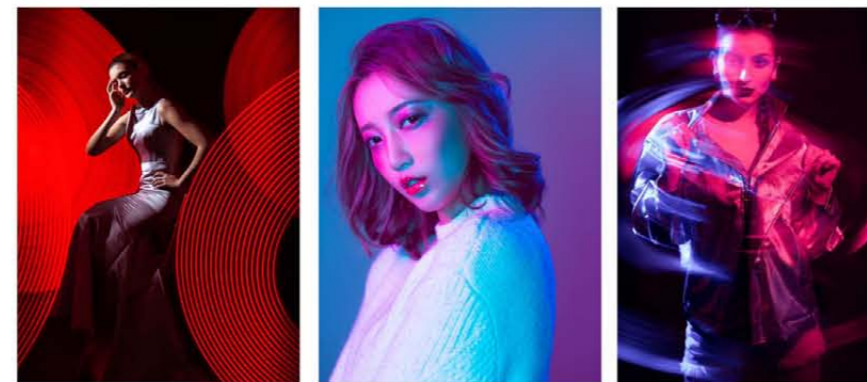
 Wireless Control
 WIFI-2.4G

MIX Series RGB Light

Three Lighting Mode. Special Lighting Effect.



Cop Car Multi Flash Storm RGB Cycle



MixWand 18

1. Three lighting mode available: bicolor tunable RGB Hard and Soft Light, RGB lighting wand.
2. Special lighting effect of flash and color cycle available in the handheld light fixture, add interesting hues for portrait photography. Set mood and tone for music videos, short films or any production with light painting..
3. Extenadable light fixture,two MixWand18 can be connected to be a long linear shape of light.

MixWand 18II

1. Bicolor hard light, tunable RGB lighting wand.
2. Two angle 30 degree and 45 degree for your choice to use in different shoots.
3. Lightweight for handheld with more brightness and higher output.
4. Built-in special lighting effects: cop car,multi flash,storm and RGB cycle.

Standard Configuration:

MixWand 18: Light x 1, Power Adapter x 1, Ballhead Hotshoe x 1
Security Rope x 1, Connector x 1, Carrying Bag x 1

MixWand 18II: light x 1, Power adapter x 1, Security Rope x 1, Carrying bag x 1

Options:

MixWand 18II: Ballhead Hotshoe, Barndoor, NP-F batteries, CN-58 2-in-1 charger



Details:



Control Panel



Security Rope



Sony NP-F style
battery Plate



1/4 20" Receiver
Mount



Ballhead Hotshoe



Connector

MixPad 27 · MixPad 11

Three Lighting Mode, Special Lighting Effect

Main Features

1. Studio Quality Lighting: NANLITE MixPad series LED panels create bright, color accurate studio lighting with minimal set up and complications. Perfect for live streaming, vlogging, photography, video and more.
2. Three lighting sources in one: basic bi-color of hard light, soft light, tuneable RGB lighting.
3. Special lighting effect of color cycle and flash, perfect for video production.
4. Dual power support: can be powered by NP-F750 or AC power adapter to use on location as well as in studio. Its compact size allows you to pack it in your bag and go shoot anywhere.

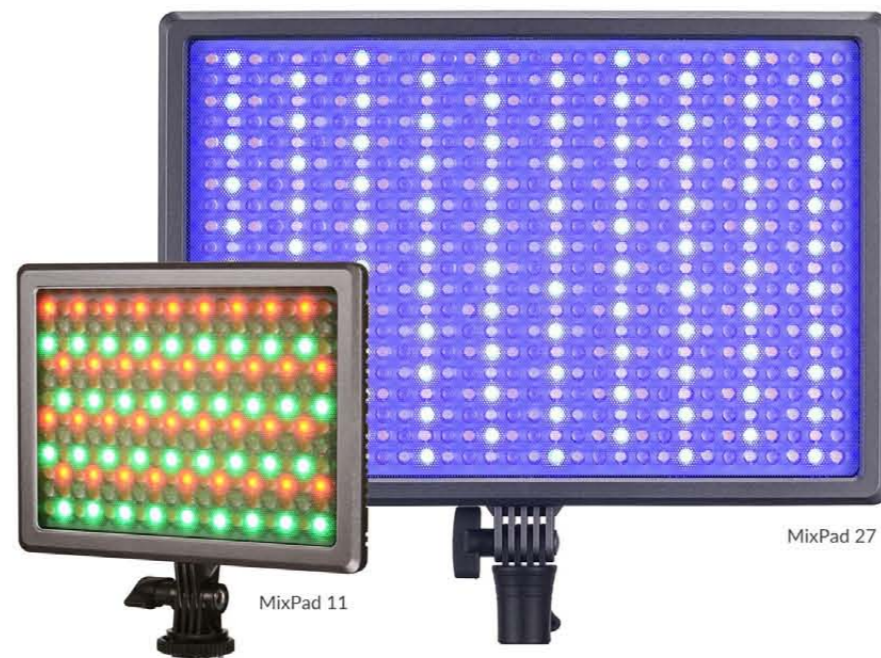
Standard Configuration

MixPad 27: Light x 1, power adapter x 1

MixPad 11: Light x 1

Options (Buy additionally):

NanLink Lighting Control System



Mix Technical Data

Model	MixPad 27	MixPad 11	MixWand 18	MixWand 18II
Power Consumption	27W	11W	18W	
Power Supply	15-24V DC, NP-F series battery		7.2-15V DC, NP-F series battery	
CRI (Ra)	98			
TLCI	95			
Color Temperature	3200K - 5600K			
Dimming	0 to 100 % continuous			
Control	Dimming, 2.4G wireless control, Wifi control			
Dimensions	348 x 308 x 55mm 137 x 121 x 21.6"	178 x 168 x 35mm 7 x 6.6 x 1.3"	590 x 67 x 36mm 23 x 2.6 x 1.4"	590 x 63 x 36.8mm 23.23 x 2.48 x 1.45"
Weight	2.86kg / 6.3lb	0.42kg / 0.92lb	0.87kg / 1.9lb	1kg / 2.2lb

Illumination(lux /fc)													
Model	MixPad27			MixPad11			MixWand18			MixWand 18II			
Distance	1M	2M	3M	1M	2M	3M	1M	2M	3M	Distance	1M	2M	3M
3200K (SMD)	433lux 40fc	102lux 10fc	48lux 5fc	93lux 9fc	24lux 2fc	11lux 1fc	128lux 12fc	32lux 3fc	15lux 1fc	3200K (30°)	2380lux 221fc	695lux 65fc	323lux 30fc
5600K (SMD)	445lux 41fc	108lux 10c	49lux 5fc	107lux 10fc	27lux 3fc	13lux 1fc	128lux 12fc	32lux 3fc	16lux 1.5fc	5600K (30°)	2770lux 258fc	806lux 75fc	376lux 35fc
3200K (LED bulb)	1757lux 163fc	436lux 41fc	190lux 18fc	471lux 44fc	134lux 12fc	59lux 5fc	960lux 89fc	244lux 23fc	108lux 10fc	3200K (45°)	1490lux 139fc	403lux 37fc	188lux 17.5fc
5600K (LED bulb)	2188lux 203fc	522lux 49fc	230lux 21fc	603lux 56fc	153lux 14fc	69lux 6fc	1108lux 103fc	280lux 26fc	128lux 12fc	5600K (45°)	1700lux 158fc	470lux 44fc	213lux 20fc
R	487lux 45fc	122lux 11fc	53lux 5fc	179lux 17fc	44lux 4fc	20lux 2fc	138lux 13fc	35lux 3fc	17lux 1.5fc	R	342lux 32fc	601lux 56fc	178lux 17fc
G	1184lux 110fc	282lux 26fc	130lux 126fc	374lux 35fc	97lux 9fc	44lux 4fc	283lux 26fc	72lux 7fc	34lux 3fc	G	93lux 9fc	161lux 15fc	47lux 4fc
B	216lux 20fc	53lux 5fc	23lux 2fc	82lux 8fc	19lux 2fc	9lux 0.8fc	65lux 6fc	16lux 1fc	7lux 0.5fc	B	43lux 4fc	741lux 7fc	22lux 2fc

MixKIT

Complete portability, compact size, portable to use both on location and indoor.

Utility in your creative work.

MixPad 11 3KIT

MixPad 11 x 3

Power adapter x 3

Carrying case x 1

LS-170-5/8 x 3 (Optional)



MixPad 27 3KIT

MixPad 27 x 3

Power adapter x 3

Carrying case x 1

L170 Light stand x 3 (Optional)



Photo by Zung Ninja

LumiPad Series Soft Panel

Bi-color, ultra thin,
ultra soft with high brightness and high CRI.



LumiPad Series Soft Panel

Bi-color, Ultra thin, Ultra soft

LumiPad 11

High CRI, accurate color temperature. WiFi, 2.4G remote and dimmer control Professional digital display screen to show color temperature, WiFi channel and power level

LumiPad 25

Accurate color, variable color temperature from 3200K to 5600K, flicker free. Powered by AC adapter or Sony NP-F series batteries.

Standard Configuration

LumiPad 11: LED pad light x 1

LumiPad 25: LED pad light x 1, 15V2A Power Adapter x 1

Optional Accessory

Tripod & handle



Variable color temperature from 3200K to 5600K, flicker free.

Powered by AC adapter or Sony NP-F Series batteries. Suitable in the studio or on location. The best choice for newborn shoots, weddings, vlogging, interviews, live streaming and more.



LumiPad Technical Data

Model	LumiPad 11	LumiPad 25
Power Consumption	11.5W	25.6W
Power Supply	AC 100-240V, NP-F series battery, 7.2-15V DC	15-24V DC, NP-F series battery
CRI (Ra)	95	95
TLCI	93	93
Color Temperature	3200K - 5600K	3200K - 5600K
Dimming	0 to 100 % continuous	0 to 100 % continuous
Control	Dimming, 2.4G wireless control, Wifi control	Dimming
Dimensions	165 x 165 x 35mm / 6.5 x 6.5 x 1.38"	310 x 345 x 55mm / 12.2 x 13.6 x 2.17"
Weight	0.25kg / 0.55lb	1.01kg / 2.23lb

Illumination(Lux)

Model	LumiPad 11				LumiPad 25			
	0.5M	1M	2M	3M	0.5M	1M	2M	3M
3200K	1273lux / 118fc	320lux / 30 fc	76lux / 7fc	36lux / 3fc	3457lux / 322fc	867 lux / 81fc	216lux / 20fc	97lux / 9fc
5600K	1278lux / 119fc	337lux / 31 fc	75lux / 7fc	39lux / 4fc	3570lux / 332fc	930lux / 86fc	232lux / 22fc	104lux / 10fc

LumiPad Lighting kit

Portable lighting kit, suitable for portrait photography, interview, live streaming...

Lumipad 25 2KIT

LumiPad 25 x 2
LS-170-5/8 x 2
Light handle x 2
Power adapter x 2
Carrying bag x 1



COMPAC Series LED Studio Light

Combines a slim profile with an impressive output to create lighting similar to large softboxes but at a fraction of the size. It is an ideal option for lighting portraits, interviews, head shots, live streaming, food photography, vlogging, product photography, and more.



Compac 200B

Compac 200

COMPAC Series LED Studio Light

The Compac series comes in 6 sizes in different power outputs from 20W to 200W, with daylight and bi-color versions to meet your different shooting requirements.



Daylight	Compac 200	Compac 100	Compac 68	Compac 40	Compac 24	Compac 20
Bi-color	Compac 200B	Compac 100B	Compac 68B	Compac 40B	Compac 24B	

Compac Technical Data

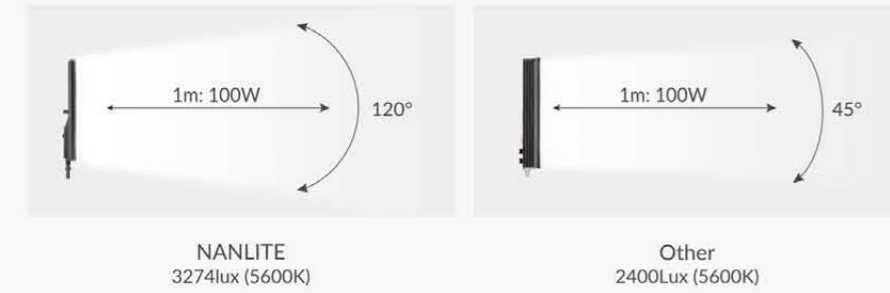
Model	Compac 20	Compac 24/24B	Compac 40/40B	Compac 68/68B	Compac 100/100B	Compac 200/200B
Power Consumption	20W	24W	40W	68W	100W	200W
Power Supply	100-240V AC					
CRI (Ra)	95					
TLCI	93					
Color Temperature	5600K	5600K / 3200K - 5600K				
Dimming	0 to 100 % continuous					
Control	ON / OFF	Dimming				Dimming, 2.4G wireless control, Wifi control
Dimensions	205 x 140 x 40mm 8.1 x 5.5 x 1.6"	316 x 172 x 75mm 12.4 x 6.8 x 3"	408 x 232 x 80mm 16.1 x 9.1 x 3.2"	566 x 350 x 90mm 22.3 x 13.8 x 3.5"	664 x 400 x 85mm 26.1 x 15.7 x 3.3"	818 x 500 x 105mm 32.2 x 19.7 x 4.1"
Weight	0.35kg / 0.77lb	0.72kg / 1.59lb	1.3kg / 2.87lb	2.5kg / 5.51lb	3.3kg / 7.28lb	6kg / 13.2lb

Illumination(Lux)

Model	Compac 20	Compac 24/24B		Compac 40/40B		Compac 68/68B		Compac 100/100B		Compac 200/200B	
Distance	5600K	3200K	5600K	3200K	5600K	3200K	5600K	3200K	5600K	3200K	5600K
1M	420	- / 670	716 / 690	- / 1450	1255 / 1540	- / 2263	2052 / 2245	- / 2744	3274 / 2862	- / 4299	4960 / 4751
2M	105	- / 156	187 / 168	- / 345	343 / 367	- / 554	540 / 554	- / 704	886 / 731	- / 1208	1359 / 1224
3M	56	- / 69	84 / 74	- / 150	157 / 163	- / 248	245 / 245	- / 314	396 / 392	- / 551	616 / 553

Main Features

1. Different sizes for different scenes, providing you with multiple solutions and creative options.
2. Combining a space-saving design with impressive output, achieves lighting similar to a large softbox but at a fraction of the size and none of the set up time.
3. Quickly achieve beautiful, studio-quality results without adding plastic filters or cloth diffusion. Rear controls enable you to dial in brightness from 0-100%.



Standard Configuration:

Light x 1pc, Power cord x 1pc



Compac 100 3KIT+T LED lighting kit

Compac 100 LED studio light x 3
LS-288-5/8 Light stand x 3
NG-066 photo desk x 1
Power cord x 3



Compac 20 2KIT

Compac 20 LED studio light x 2,
Folding photo table x 1,
Background papers x 1
Adjustable bracket x 2,
LS-DT-5/8 Light stand x 2,
Connecting base x 2,
Carrying bag x 1



Compac 100 4KIT+T with green background whole set

Compac 100 LED studio light x 4
Power cord x 4
LS-288-5/8 Light stand x 4
U shape background x 1
Frame x 1
Green cloth x 1



Compac 20 3KIT

Compac 20 LED studio light x 3
Folding photo table x 1
Background papers x 1
Adjustable bracket x 3
LS-DT-5/8 Light stand x 2
Connecting base x 3
Carrying bag x 1
LS-60-5/8 Light stand x 1



COMPAC Series Application

Portrait Photography

Light & softbox 2-in-1 design, adjustable continuous lighting, offering you the easy setup and perfect solution for portrait photography.



Product Photography

Compac series can quickly come out beautiful, studio-quality results, which is practical and help in product photography.



Live Streaming

Impressive high color rendering provide you a perfect lighting environment in your live streaming.

Studio Photography

With potential to use as a complete photography studio lighting solution.



Kids Photography

Ultra soft, it can be used for continuous shooting, to capture every moment of the children.

P Series LED Spot Light

High CRI • Compact Size

Main Features

1. CRI rated 95, high color rendering index.
2. Designed with Bowens Mount, compatible with Bowens type accessories (beauty dish, softbox and others).
3. It's the perfect lighting source for photography and video, especially for portrait shooting, children photography and still life photography.

Standard Configuration

Light x 1pc, Power cable x 1pc, White soft cap x 1pc

Options (Buy additionally):



18X Fresnel Lens
(Suitable for P100 only)



CN-W2 WiFi
Transfer Device



RC-1 Remote
Controller



E6060 softbox



Parabolic softbox



Heat dissipation



Dimmer



Bowens Mount



Handle

P series Technical Data

Model	P100	P200
Power Consumption	100W	200W
Power Supply	100-240V AC	100-240V AC
CRI (Ra)	95	95
TLCI	93	93
Color Temperature	5600K	5600K
Dimming	0 to 100 % continuous	0 to 100 % continuous
Control	Dimming, 2.4G wireless control, Wifi control	Dimming, 2.4G wireless control, Wifi control
Dimensions	295 x 295 x 180mm / 11.6 x 11.6 x 7.1"	295 x 290 x 180mm / 11.6 x 11.4 x 7.1 "
Weight	3.6kg / 7.2lb	3.7kg / 8.1lb

Illumination(Lux)

Model	P100			P200			
	1m	2m	3m	1m	2m	3m	4m
Without	2966lux / 278fc	715lux / 67fc	338lux / 32fc	8000lux / 750fc	2200lux / 206fc	1060lux / 99fc	630lux / 59fc
Spot	26000lux / 2437fc	6100lux / 572fc	2760lux / 259fc	/	/	/	/
Flood	9710lux / 921fc	2650lux / 248fc	1200lux / 112fc	/	/	/	/

LitoLite Series Focusable Light

High brightness, Flexible to focus and flood, Small Size

Main Features

1. Small yet top quality COB chips with standard color temperature, low power consumption with high brightness.
2. Compact size and lovely design, could be mounted on camera or handheld shooting.
3. The perfect lighting solution of ENG, streaming, interview, etc...

Standard Configuration:

LitoLite 8F:

Light x 1pc, Filter x 2pcs,
Barndoor x 2pcs,
Frame for French Cokin filter x 1pc,
AA Battery box x 1pc

LitoLite 10FB:

Light x 1pc, Filters x 2pcs,
Carrying bag x 1pc,
Battery box x 1pc

LitoLite 28F:

Light x 1pc,
15V 2.4A power adapter x 1pc
Carrying bag*1pc,
Barndoor x 1pc
Fliter x 1set



LitoLite 8F

LitoLite 10FB

LitoLite 28F



Dual Power supply

Barn Door

Angle Adjustable

Power Switch

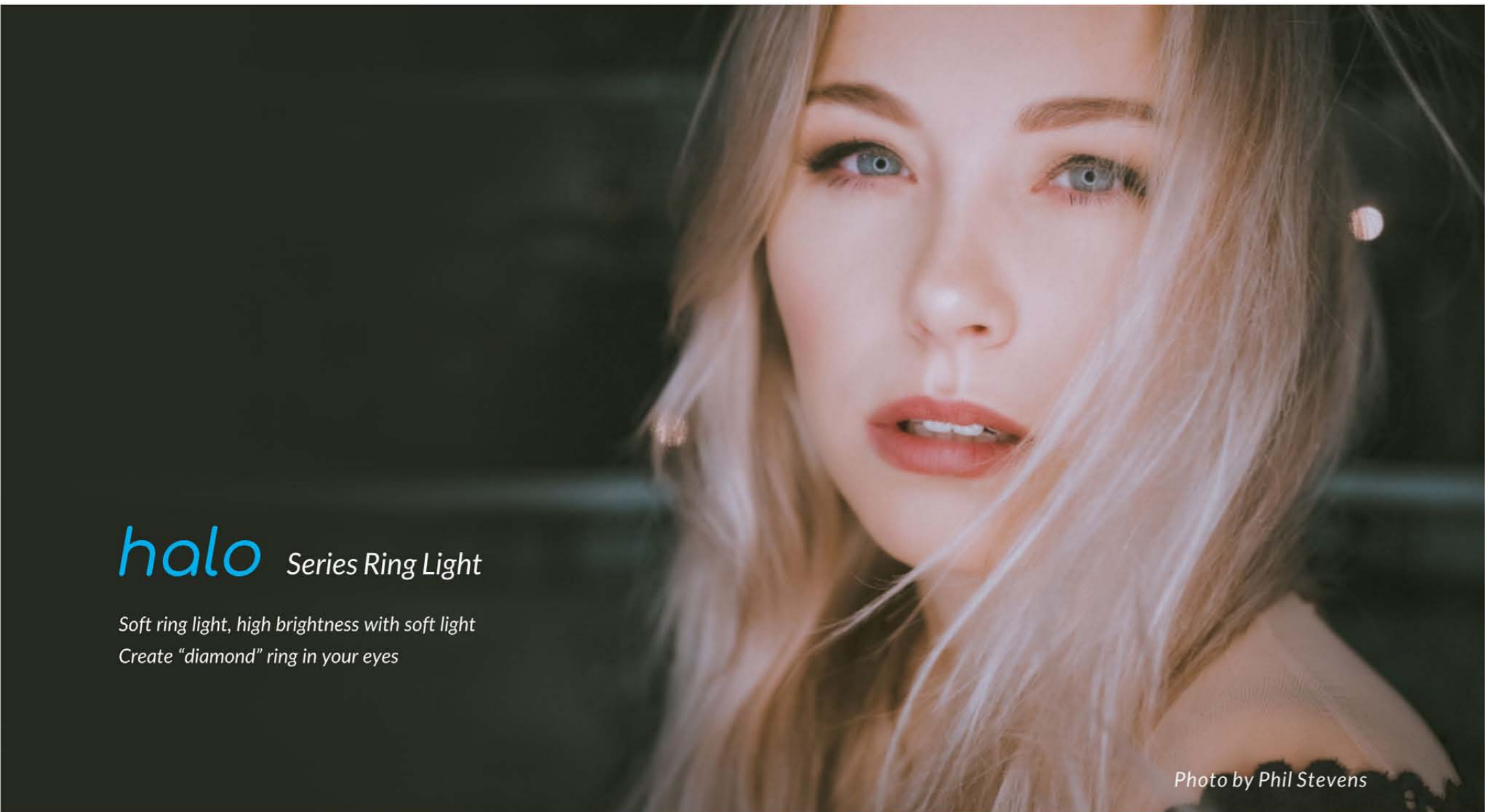
调教旋钮

LitoLite Technical Data

Model	LitoLite 8F	LitoLite 10FB	LitoLite 28F
Power Consumption	8W	10W	28W
Power Supply	7.2-12V DC	7.2-12V DC	15V-24V DC
CRI (Ra)	95	90	95
Color Temperature	5600K	3200K - 5600K	5600K
Dimming	0 to 100 % continuous	0 to 100 % continuous	0 to 100 % continuous
Control	Dimming	Dimming	Dimming
Dimensions	170 x 150 x 80mm / 6.7 x 5.9 x 3.1"	105 x 125 x 140mm / 4.1 x 4.9 x 5.5"	118.5 x 92 x 162mm / 4.7 x 3.6 x 6.4"
Weight	0.3kg / 0.7lb	0.36kg / 0.8lb	0.61kg / 1.34lb

Illumination(lux / fc)

Model	LitoLite 8F		LitoLite 10FB				LitoLite 28F	
CCT	5600K		5600K		3200K		5600K	
Distance	Spot 10°	Flood 60°	Spot 15°	Flood 55°	Spot 15°	Flood 55°	Spot 20°	Flood 50°
1M	4790lux 445fc	646lux 60fc	8503lux 790fc	1047lux 97fc	5523lux 513fc	738lux 69fc	4656lux 433fc	1544lux 143fc
2M	1005lux 93fc	155lux 14fc	2067lux 192fc	235lux 22fc	1337lux 124fc	175lux 16fc	1073lux 100fc	376lux 35fc
3M	423lux 39fc	67lux 6.2fc	931lux 87fc	101lux 9fc	573lux 53fc	75lux 7fc	462lux 43fc	160lux 15fc



halo Series Ring Light

Soft ring light, high brightness with soft light
Create "diamond" ring in your eyes

Photo by Phil Stevens



Perfect for portrait photography, video production, wedding photography, vlogging, cosmetology, hair dressing, still life shooting, makeup tutorial and more.

NANLITE ring lights offer optional accessories, for more professional lighting solutions.





Photo by Iulia Andrei & Cosmin



halo 16C NEW IN 2019

Innovative colorful beauty lighting.

Main Features

1. Three lighting modes available, soft bi-color and tunable RGB Light, creative shooting scenes.
2. Special lighting effect of color cycle and flash mode, creating a distinctive vision in your shoot.
3. Intelligent touch switch, operating silently and easily.



USB port

Intelligent Touch Switch

Standard Configuration:

Ring light x 1pc, Mirror x 1pc, Phone holder x 1pc, Power adapter x 1pc, Power cord x 1pc

halo 16C		Technical Data			
Power Consumption	28W	Color Temperature	2700K - 6500K		
Power Supply	12-16.8V DC, 100-240V AC	Dimming	0 to 100 % continuous		
CRI (Ra)	95	Weight	1.92kg 4.2lb		
Control	Dimming, WiFi control, Wireless Remote Control				
Dimensions	406.2mm(out-diameter), 312.8mm(in-diameter) 16"(out-diameter), 12.3"(in-diameter)				
Illumination(lux/ft)					
Distance	1M	2M	3M	4M	5M
2700K	456lux / 42.38fc	126lux / 11.71fc	59lux / 5.48fc	36lux / 3.35fc	24lux / 2.23fc
6500K	490lux / 45.54fc	126lux / 11.52fc	59lux / 5.48fc	36lux / 3.35fc	24lux / 2.23fc
R	171lux / 15.59fc	46lux / 4.28fc	22lux / 2.04fc	13lux / 1.21fc	9lux / 0.94fc
G	280lux / 26.02fc	75lux / 6.97fc	36lux / 3.35fc	22lux / 2.04c	15lux / 1.39fc
B	84lux / 7.81fc	22lux / 2.04fc	11lux / 1.02fc	7lux / 0.65fc	4lux / 0.37fc

halo 14U NEW IN 2019

Built-in battery

Easy to use outdoor and indoor

Standard Configuration

- Ring light x 1
- Mirror x 1
- Phone holder x 1
- Power adapter x 1
- USB cable x 1



halo 16

The halo 16 can be powered by either an AC adapter or a Sony NP-F style battery(optional).

Also with the USB power pass through port you can charge smartphones and other devices for live streaming, vlogging, timelapses and more.

Standard Configuration

- Ring light x 1pc, Mirror x 1pc, Phone holder x 1pc, Power adapter x 1pc, Power cord x 1pc



Digital Screen

USB Port



halo Technical Data

Model	<i>halo 14U (Built-in battery)</i>	<i>halo 16</i>
Power Consumption	16.8W	29W
Power Supply	12-16.8V DC; 100-240V AC	12-18V DC; NP-F series battery
CRI (Ra)	95	95
Color Temperature	2700K - 6500K	3200K - 5600K
Dimming	0 to 100 % continuous	0 to 100 % continuous
Control	Dimming	Dimming, 2.4G wireless control, Wifi control
Dimensions	343mm (out-diameter), 279.4mm (in-diameter) 13.5" (out-diameter), 11" (in-diameter)	400mm (out-diameter), 305mm (in-diameter) 15.7" (out-diameter), 12" (in-diameter)
Weight	1.46kg / 3.21lb	0.95kg / 2.09lb

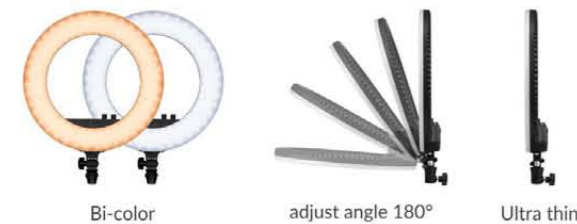
Illumination(lux /fc)

Model	<i>halo 14U (Built-in battery)</i>				<i>halo 16</i>	
Distance	2700K	3200K	5600K	6500K	3200K	5600K
1M	255lux / 24fc	307lux / 29fc	326lux / 30fc	315lux / 29fc	430lux 40fc	435lux 40fc
2M	64lux / 6fc	86lux / 8fc	91lux / 8fc	80lux / 7fc	135lux 13fc	135lux 13fc
3M	26lux / 2fc	42lux/ 4fc	47lux / 4fc	35lux / 3fc	74lux 7fc	75lux 7fc

halo 18 / halo 14

Classic hot sale ring lights, 2 sizes for your different demands.
Soft lighting, Bi-color, High CRI, easy to set up!

The NANLITE halo 14, halo 14U, halo 16 and halo 18 are all ultra thin, bicolor from warm to cold, have 180°adjust angel, meet your different shooting requirement.



Standard Configuration

Ring light x 1pc, Power cord x 1pc, Mirror x 1pc, Phone holder x 1pc

halo 19

19"big size, standard 5600K, High CRI with traditional LED, powerful enough to be used as a studio light or even outdoors.

Standard Configuration

Ring light x 1
Soft filter x 1
Spring tube x 1
Power adapter x 1
Power cord x 1



halo Technical Data

Model	halo 18	halo 14	halo 19
Power Consumption	48W	24W	38W
Power Supply	100-240V AC	100-240V AC	12-16.8V DC; 100-240V AC
CRI (Ra)	95	95	95
Color Temperature	2700K - 6500K	2700K - 6500K	5600K
Dimming	0 to 100 % continuous	0 to 100 % continuous	0 to 100 % continuous
Control	Dimming	Dimming	Dimming
Dimensions	465mm (out-diameter), 305mm (in-diameter) 18.3" (out-diameter), 12" (in-diameter)	345mm (out-diameter), 265mm (in-diameter) 13.6" (out-diameter), 10.4" (in-diameter)	485mm(out-diameter), 365mm(in-diameter) 19.1"(out-diameter), 14.4"(in-diameter)
Weight	1.55kg / 3.41lb	0.65kg / 1.43lb	1.54kg / 3.39lb

Illumination(lux /fc)

Model	halo 18				halo 14				halo 19
Distance	2700K	3200K	5600K	6500K	2700K	3200K	5600K	6500K	5600K
1M	822lux 76fc	470lux 44fc	487lux 45fc	984lux 91fc	283lux 26fc	864lux 80fc	826lux 77fc	323lux 30fc	5800lux / 539fc
2M	208lux 19fc	146lux 14fc	155lux 14fc	267lux 25fc	75lux 7fc	238lux 22fc	229lux 21fc	91lux 8fc	1660lux / 154fc
3M	100lux 9fc	78lux 7fc	86lux 8fc	125lux 12fc	33lux 3fc	113lux 11fc	109lux 10fc	41lux 4fc	734lux / 68fc

SA Series LED Studio Light

With included barn door, light weight, wireless control, can be powered by AC power adapter or battery, suitable for studio, ENG, weddings and more. Provides even and bright illumination.



Main Features

1. Specially selected LEDs with high color rendition index (CRI ≥ 95) provide for excellent light quality.
2. Four large barn doors for direct-aim lighting. Built-in frame mount for diffusor, full soft diffusor and blue diffusor supplied together with the light.
3. With digital display screen, and built-in 2.4G receiver, can be easily controlled by remote controller and the NANLITE APP via WiFi transfer device.
4. High quality ABS housing, light weight and durable, with groove design at the back to be portable to carry out.



Standard Configuration:

- Light x 1
- Carrying Bag x 1
- Power Adapter x 1
- Filter x 3

Optional:



SoftBox

NanLink Lighting Control System

RC-1 Remote Controller

Details:



Sony V-lock Battery Plate

Handheld Design

Well Heat Dissipation

SA Technical Data

Model	600CSA	900CSA	1200CSA
Power Consumption	36W	54W	72W
Power Supply	14.8V DC; 100-240V AC, Sony V-lock battery	14.8V DC; 100-240V AC, Sony V-lock battery	14.8V DC; 100-240V AC, Sony V-lock battery
CRI (Ra)	95	95	95
TLCI	93	93	93
Color Temperature	3200K - 5600K	3200K - 5600K	3200K - 5600K
Dimming	0 to 100 % continuous	0 to 100 % continuous	0 to 100 % continuous
Control	Dimming, 2.4G wireless control, WiFi	Dimming, 2.4G wireless control, WiFi	Dimming, 2.4G wireless control, WiFi
Dimensions	345 x 385 x 90mm / 13.5 x 15.1 x 3.5"	420 x 375 x 90mm / 16.5 x 14.7 x 3.5"	470 x 380 x 90mm / 18.4 x 14.9 x 3.5"
Weight	2.1kg / 4.6lb	2.4kg / 5.3lb	2.5kg / 5.7lb

Illumination(lux / fc)

Model	600CSA		900CSA		1200CSA	
	3200K	5600K	3200K	5600K	3200K	5600K
Distance						
1M	2280lux / 212fc	2526lux / 235fc	3356lux / 312fc	3464lux / 322fc	4900lux / 455fc	5060lux / 470fc
2M	595lux / 55fc	670lux / 62fc	860lux / 80fc	897lux / 83fc	1284lux / 119fc	1376lux / 128fc
3M	281lux / 26fc	311lux / 29fc	396lux / 37fc	415lux / 38.5fc	591lux / 55fc	625lux / 57fc
4M	162lux / 15fc	181lux / 17fc	233lux / 22fc	246lux / 23fc	340lux / 32fc	364lux / 34fc
5M	107lux / 10fc	119lux / 11fc	156lux / 15fc	169lux / 16fc	229lux / 21fc	243lux / 23fc

DSA Series is the upgraded version of SA led studio light, with DMX control, it is the perfect choice for studio, TV station lighting.



DSA series

SA Technical Data

Model	600SA / 600DSA		900SA / 900DSA		1200SA / 1200DSA	
Power Consumption	36W		54W		72W	
Power Supply	14.8V DC; 100-240V AC, Sony V-lock battery		14.8V DC; 100-240V AC, Sony V-lock battery		14.8V DC; 100-240V AC, Sony V-lock battery	
CRI (Ra)	95		95		95	
TLCI	93		93		93	
Color Temperature	3200K / 5600K		3200K / 5600K		3200K / 5600K	
Dimming	0 to 100 % continuous		0 to 100 % continuous		0 to 100 % continuous	
Control	Dimming, 2.4G wireless control, WiFi, DSA: DMX					
Dimensions	340 x 370 x 80mm 13.3 x 14.5 x 3.1"	375 x 343 x 87mm 14.7 x 13.4 x 3.4"	415 x 375 x 80mm 16.3 x 14.7 x 3.1"	395 x 415 x 85mm 15.5 x 16.3 x 3.3"	475 x 400 x 80mm 18.6 x 15.7 x 3.1"	470 x 380 x 85mm 18.4 x 14.9 x 3.3"
Weight	1.8kg / 4.0lb	2.1kg / 4.6lb	2.1kg / 4.6lb	2.4kg / 5.3lb	2.5kg / 5.5lb	2.5kg / 5.7lb
Illumination(lux /fc)						
1M	5130lux / 477fc	6809lux / 633fc	7700lux / 716fc	8256lux / 767fc	9100lux / 846fc	11700lux / 1087fc
2M	1350lux / 125.5fc	1592lux / 148fc	2040lux / 190fc	2069lux / 192fc	2400lux / 223fc	2873lux / 267fc
3M	620lux / 58fc	692lux / 64fc	930lux / 86fc	930lux / 86fc	1060lux / 98.5fc	1282lux / 119fc

600/900/1200SA 3KIT+T

Basic 3 lighting kit solution, with the trolley carrying bag, very light-weight and portable. Perfect for interview, weddings, studio, live streaming indoor and outdoor solution.



Standard Configuration:

600SA / CSA 3KIT+T	900SA / CSA 3KIT+T	1200SA / CSA 3KIT+T
600SA / CSA x 3	900SA / CSA x 3	1200SA/CSA x 3
LS-186-5/8 light stand x 3	LS-186-5 / 8 light stand x 3	LS-186-5/8 light stand x 3
Power adapter x 3	Power adapter x 3	Power adapter x 3
Filter x 3	Filter x 3	Filter x 3
CC-ST-85 trolley case x 1	CC-ST-85 trolley case x 1	CC-ST-85 trolley case x 1

Lighting Modifiers

Light modifier is the key to creating amazing images. Each Nanlite Lighting Modifier is with their own effect on continuous light and provide more lighting effects possibilities.



SoftBox Forza-60

SB-FZ60
Dimension: $\phi 58 \times 30\text{cm}$
Compatibility: Forza 60
Fabric Eggcrate: Optional



SoftBox Parabolic 90

SB-PR-90
Dimension: $\phi 90 \times 63\text{cm}$
Compatibility: Standard Bowens Mount
Fabric Eggcrate: Optional



SoftBox Parabolic 120

SB-PR-120
Dimension: $\phi 120 \times 74\text{cm}$
Compatibility: Standard Bowens Moun
Fabric Eggcrate: Optional



SoftBox Parabolic 150

SB-PR-150
Dimension: $\phi 150 \times 110\text{cm}$
Compatibility: Standard Bowens Mount
Fabric Eggcrate: Optional



SoftBox MixPanel-60

SB-MP60
Dimension: $38 \times 43 \times 21\text{cm}$
Compatibility: MixPanel 60
Fabric Eggcrate: Included



SoftBox MixPanel-150

SB-MP150
Dimension: $50 \times 45 \times 21\text{cm}$
Compatibility: MixPanel 150
Fabric Eggcrate: Included



Softbox Strip-140X30

SB-ST-140X30
Dimension: $140 \times 30 \times 40\text{cm}$
Compatibility: Standard Bowens Mount
Fabric Eggcrate: Optional



SoftBox Asymmetric 110X45

SB-AS-110X45
Dimension: $110 \times 43 \times 34\text{cm}$
Compatibility: Standard Bowens Mount
Fabric Eggcrate: Optional



SoftBox Forza-60

SB-FZ60
Dimension: $\phi 58 \times 30\text{cm}$
Compatibility: Forza 60
Fabric Eggcrate: Optional



SoftBox Parabolic 90

SB-PR-90
Dimension: $\phi 90 \times 63\text{cm}$
Compatibility: Standard Bowens Mount
Fabric Eggcrate: Optional



SoftBox Parabolic 120

SB-PR-120
Dimension: $\phi 120 \times 74\text{cm}$
Compatibility: Standard Bowens Moun
Fabric Eggcrate: Optional



SoftBox Parabolic 150

SB-PR-150
Dimension: $\phi 150 \times 110\text{cm}$
Compatibility: Standard Bowens Mount
Fabric Eggcrate: Optional



E model soft box

SB-E6060
Dimension: $60 \times 60\text{cm}$
Compatibility: Standard Bowens Mount
Fabric Eggcrate: Optional



Umbrella Deep Silver 135

U-135DS
Dimension: $\phi 135 \times 88\text{cm}$
Compatibility: Standard Bowens Mount



Umcrella Deep Translucent 165

U-180ST
Dimension: $\phi 180 \times 110\text{cm}$
Compatibility: Standard Bowens Mount



Umbrella Shallow Translucent 180

U-180ST
Dimension: $\phi 180 \times 110\text{cm}$
Compatibility: Standard Bowens Mount



Accessories

CN-58

2 IN 1 Charger



CN-B08

Hotshoe adapter



CN-B09

Metal Clamp



PA-7.5V2A

Power Adapter 7.5V 2A



Professional and functional tripod

CN-L11

Dimension: 120mm x 40mm
Rotating Angle: 0 - 120°



CB-DT/DC

D-TAP Cable with DC socket



RC-1

Bi-color Remote Controller
Channel: 99
Control Distance: 15M



BT-BA-V

External Battery Base
For Sony V-lock Battery



BT-BA-SNP/V

For Sony NP-F series battery x 2pcs



CN-A2.4G

Remote Controller
Channel: 99
Control Distance: 15M



CN-W2

Wireless Channel: 512
Distance of control: 30M



BT-SNP-6AA

Holds 6 AA batteries
suitable for LED light with Sony
NP-F mount.



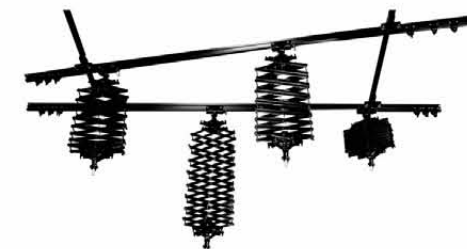
CN-CGR-D / 3E / E8 / E6

For Panasonic CGR-D battery
For Nikon battery
For Canon E8 battery
For Canon E6 battery



Rail system

Model No.: CN-D4
Size: 3m x 3m



Accessories PROFESSIONAL CARRYING CASE

Trolley Case

CC-ST-85

Material: cloth, MDF
 Dimension: 61cm * 34cm * 59cm
 Weight: about 7.2kg
 Packed Item:
 03 * 600 / 900 / 1200 series
 03 * NG-L216 / 186 Light Stand



LED 2KIT Portable Bag

CN-T2

Material: cloth, PVC
 Dimension: 61cm * 24cm * 50cm
 Weight: about 4.3kg
 Packed Item:
 02 * 600 / 900 / 1200 series
 02 * NG-L216 / 186 Light Stand



LED 3KIT Portable Bag

CN-T3

Material: cloth, PVC
 Dimension: 61cm * 35cm * 50cm
 Weight: about 6.3kg
 Packed Item:
 03 * 600 / 900 / 1200 series
 03 * NG-L216 / 186 Light Stand



Light Stand Carry Bag

CC-S-3LS-67

Material: Cloth
 Dimension: 67cm x DM 13cm
 Weight: about 0.5kg



Plastic Trolley Case

CC-PT-62

Material: ABS
 Dimension: 64.5cm * 35.9cm * 44.8cm
 Weight: about 2.3kg



Plastic Trolley Case

CC-PT-37

Material: ABS
 Dimension: 51cm x 29cm x 25cm
 Weight: about 2kg



Plastic Carry Case

CC-P-38

Material: ABS
 Dimension: 47cm x 24cm x 34cm
 Weight: about 2kg



Accessories LIGHT STAND

LS-186-5/8

Made of Aluminium Alloy
 Setting Height: approx. 49cm ~ 186cm
 Weight: approx. 3KG



LS-170-5/8

Made of Iron
 Setting Height: approx. 73cm ~ 170cm
 Weight: approx. 5KG



LS-216-5/8

Made of Aluminium Alloy
 Setting Height: approx. 50cm ~ 195cm
 Weight: approx. 4KG



LS-288-5/8

Made of Iron pipe and Aluminum section
 Setting Height: approx. 108cm ~ 290cm
 Weight: approx. 6KG



LS-326-HD

Made of Aluminium Alloy
 Setting Height: approx. 140cm ~ 310cm
 Weight: approx. 8.0KG



LS-C-299-5/8

Made of Aluminium Alloy
 Setting Height: approx. 145cm ~ 328cm
 Breadth: 120 ~ 220cm
 Weight: approx. 8.1KG





Backdrop Elevator Series

BE-U1

Electric Expand drive Set



BE-RR

Receiver



BE-RC

Controller
Supply Voltage: 220V / 110V
Remote Control Distance: 15M



BE-2RS

2 Axle Radio Control
Electric Background Support Elevator
With holder hooks,
could fix on ceiling, wall and light stand.



BE-3R

3 Axle Radio Control Electric Background
Support Elevator



BE-3RS

3 Axle Radio Control
Electric Background Support Elevator
With holder hooks,
could fix on ceiling, wall and light stand.



BE-4R

4 Axle Radio Control Electric Background
Support Elevator



BE-4RS

4 Axle Radio Control
Electric Background Support Elevator
With holder hooks,
could fix on ceiling, wall and light stand.



Backdrop Elevator Series

BE-1

1 Axle Manual Control
Background Support Elevator



BE-2

2 Axle Manual Control
Background Support Elevator



BE-3

3 Axle Manual Control
Background Support Elevator



BE-4

4 Axle Manual
Control Background Support Elevator



BE-6

6 Axle Manual Control
Background Support Elevator



BE-R3

Diameter: $\varphi = 5.1\text{cm}$
Assembled Length: 300cm
Single Bar Length: 100cm
Suitable for hanging up Manual Control or
Electric Background Support Elevator



BE-SK1

Length of each bar: 100cm
Max. Height: 286cm
Length of each bar: 300cm

